

Block Summary

Location :

The area is Located in the Northern part of North Western about 50 km south of Alamein City.

Total Area: 2508 km²

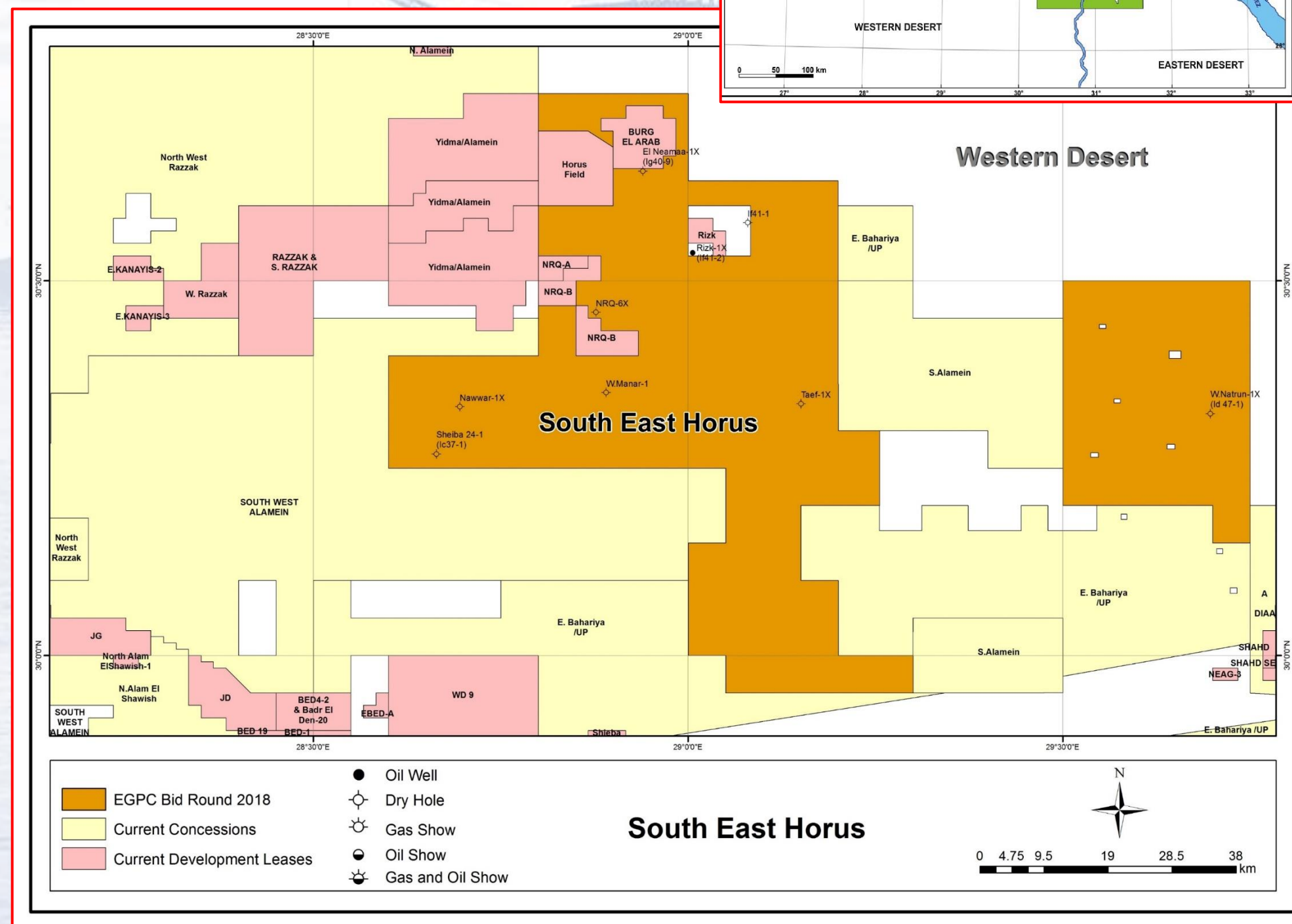
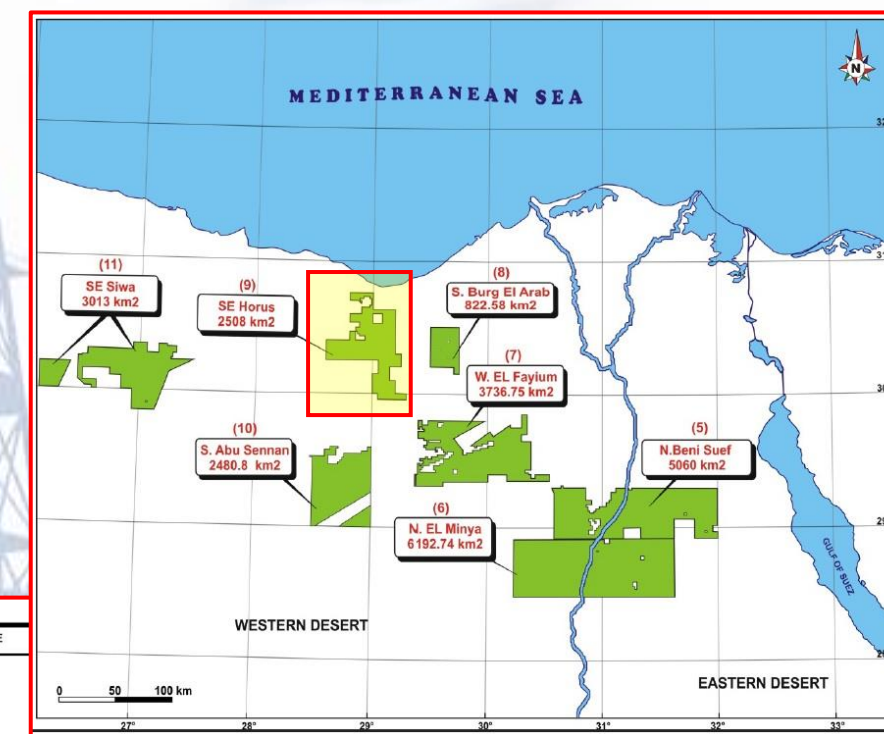
Previous Concessionaire: Transglobe, Apache, Ina Nafte, Cepsa & Amoco

2D Seismic Survey: 4468 Km

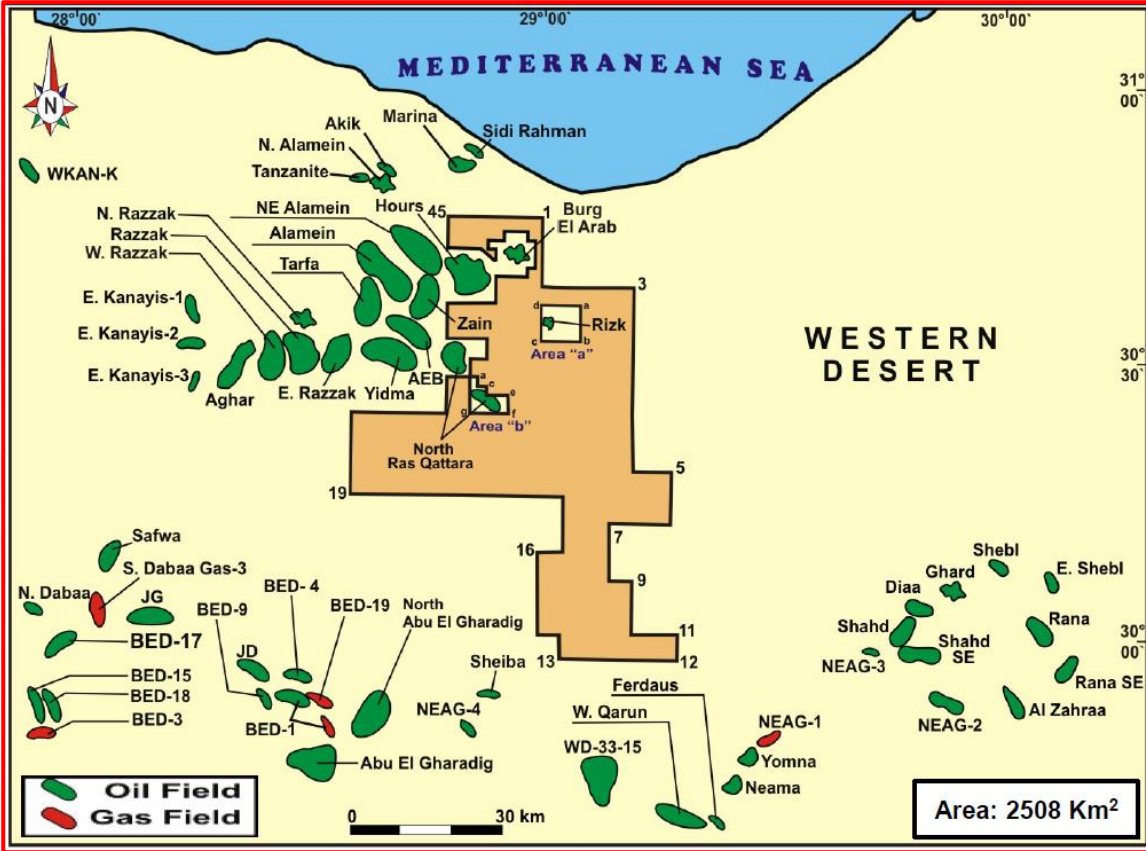
3D Seismic Survey: 2659 Km²

Drilled Wells: 6 Wells

Range of wells TD: From 7300 ft. to 11076 ft.



Block Coordinates



Geographic Coordinate System used: Egypt 1907

Angular Unit: Degree

Radians per unit: 0.0174532925199433

Prime Meridian: Greenwich, Longitude (00° 00' 00.0011)

Datum: Egypt 1907

Spheroid: Helmert 1906

Semi major Axis: 6378200.0

Semi minor Axis: 6356818.169627891

Inverse Flattening: 298.3

Coordinates

LAT.	LONG.	LAT.	LONG.
1- 30° 45' 00.00"	29° 00' 00.00"	24- 30° 30' 00.00"	28° 51' 00.00"
2- 30° 38' 00.00"	29° 00' 00.00"	25- 30° 30' 00.00"	28° 53' 00.00"
3- 30° 38' 00.00"	29° 12' 00.00"	26- 30° 32' 00.00"	28° 53' 00.00"
4- 30° 18' 00.00"	29° 12' 00.00"	27- 30° 32' 00.00"	28° 48' 00.00"
5- 30° 18' 00.00"	29° 15' 20.00"	28- 30° 36' 00.00"	28° 48' 00.00"
6- 30° 12' 00.00"	29° 15' 20.00"	29- 30° 36' 00.00"	28° 54' 00.00"
7- 30° 12' 00.00"	29° 09' 00.00"	30- 30° 39' 00.00"	28° 54' 00.00"
8- 30° 06' 00.00"	29° 09' 00.00"	31- 30° 39' 00.00"	28° 58' 00.00"
9- 30° 06' 00.00"	29° 12' 00.00"	32- 30° 40' 00.00"	28° 58' 00.00"
10- 30° 00' 00.00"	29° 12' 00.00"	33- 30° 40' 00.00"	28° 59' 00.00"
11- 30° 00' 00.00"	29° 18' 00.00"	34- 30° 43' 00.00"	28° 59' 00.00"
12- 29° 57' 00.00"	29° 18' 00.00"	35- 30° 43' 00.00"	28° 58' 00.00"
13- 29° 57' 00.00"	29° 03' 00.00"	36- 30° 44' 00.00"	28° 58' 00.00"
14- 30° 00' 00.00"	29° 03' 00.00"	37- 30° 44' 00.00"	28° 55' 00.00"
15- 30° 00' 00.00"	29° 00' 00.00"	38- 30° 43' 00.00"	28° 55' 00.00"
16- 30° 09' 00.00"	29° 00' 00.00"	39- 30° 43' 00.00"	28° 53' 00.00"
17- 30° 09' 00.00"	29° 03' 00.00"	40- 30° 42' 00.00"	28° 53' 00.00"
18- 30° 15' 00.00"	29° 03' 00.00"	41- 30° 42' 00.00"	28° 54' 00.00"
19- 30° 15' 00.00"	28° 36' 00.00"	42- 30° 40' 42.83"	28° 54' 00.00"
20- 30° 24' 00.00"	28° 36' 00.00"	43- 30° 42' 00.00"	28° 52' 00.00"
21- 30° 24' 00.00"	28° 48' 00.00"	44- 30° 42' 00.00"	28° 48' 00.00"
22- 30° 28' 00.00"	28° 48' 00.00"	45- 30° 45' 00.00"	28° 48' 00.00"
23- 30° 28' 00.00"	28° 51' 00.00"		

Excluded Areas

Area "a"

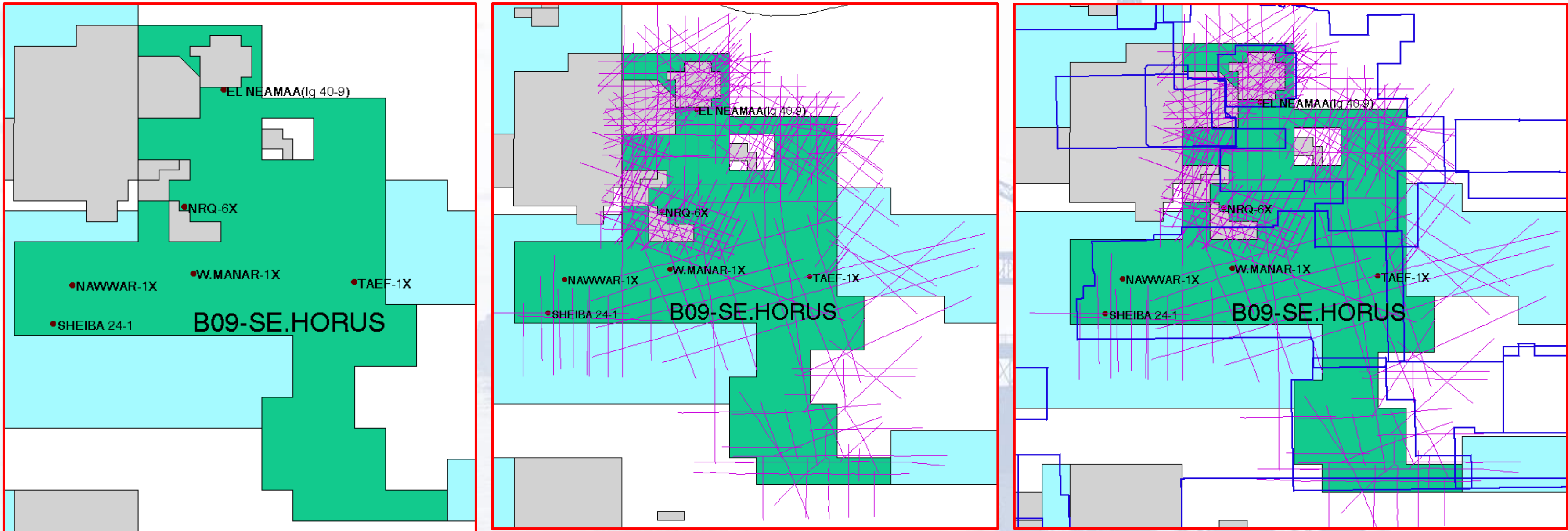
LAT.	LONG.
a- 30° 36' 00.00"	29° 05' 00.00"
b- 30° 32' 00.00"	29° 05' 00.00"
c- 30° 32' 00.00"	29° 00' 00.00"
d- 30° 36' 00.00"	29° 00' 00.00"

Area "b"

LAT.	LONG.
a- 30° 28' 00.00"	28° 52' 00.00"
b- 30° 27' 00.00"	28° 52' 00.00"
c- 30° 27' 00.00"	28° 53' 00.00"
d- 30° 26' 00.00"	28° 53' 00.00"
e- 30° 26' 00.00"	28° 56' 00.00"
f- 30° 24' 00.00"	28° 56' 00.00"
g- 30° 24' 00.00"	28° 51' 00.00"
h- 30° 28' 00.00"	28° 51' 00.00"

SOUTHEAST HORUS WELLS

<i>NO.</i>	<i>WELL NAME / NEW NAME</i>	<i>COMPANY</i>	<i>SPUD. DATE COMP. DATE</i>	<i>LAT. LONG.</i>	<i>T. D. FEET</i>	<i>FORMATION REACHED</i>	<i>FINAL STATUS</i>
<i>1</i>	<i>W. MANAR-1</i>	<i>TRANSGLOBE</i>	<i>02/12/2013 31/12/2013</i>	<i>30° 21' 03.6" 28° 53' 26.9"</i>	<i>07,300</i>	<i>KHARITA</i>	<i>P & A (Gas shows in Abu Roash & Bahariya)</i>
<i>2</i>	<i>TAEF -1X (Id 42-1)</i>	<i>TRANSGLOBE</i>	<i>01/11/2013 26/11/2013</i>	<i>30° 20' 09.8" 29° 09' 02.6"</i>	<i>07,435</i>	<i>KHARITA</i>	<i>P & A (Gas shows in Abu Roash & Bahariya)</i>
<i>3</i>	<i>NRQ -6X</i>	<i>APACHE</i>	<i>11/10/2011 26/10/2011</i>	<i>30° 27' 28.4" 28° 52' 37.1"</i>	<i>8,623</i>	<i>KHARITA</i>	<i>P & A</i>
<i>4</i>	<i>EL NEAMAA-1X (Ig 40-9)</i>	<i>INA NAFTE</i>	<i>20/09/2010 27/10/2010</i>	<i>30° 38' 46.8" 28° 56' 22.9"</i>	<i>09,050</i>	<i>KHARITA</i>	<i>P & A (Oil & Gas shows in Bahariya & Kharita)</i>
<i>5</i>	<i>NAWWAR-1X</i>	<i>CEPSA</i>	<i>04/09/2009 28/09/2009</i>	<i>30° 19' 55.0" 28° 41' 43.1"</i>	<i>09,374</i>	<i>MASAJID</i>	<i>P & A (Oil & Gas shows in Abu Roash & Bahariya)</i>
<i>6</i>	<i>SHEIBA 24-1 (Ic 37-1)</i>	<i>AMOCO</i>	<i>26/04/1987 17/06/1987</i>	<i>30° 16' 07.5" 28° 39' 51.6"</i>	<i>10,588</i>	<i>BAHREIN</i>	<i>P & A (Oil & Gas shows in Cretaceous & Jurassic)</i>



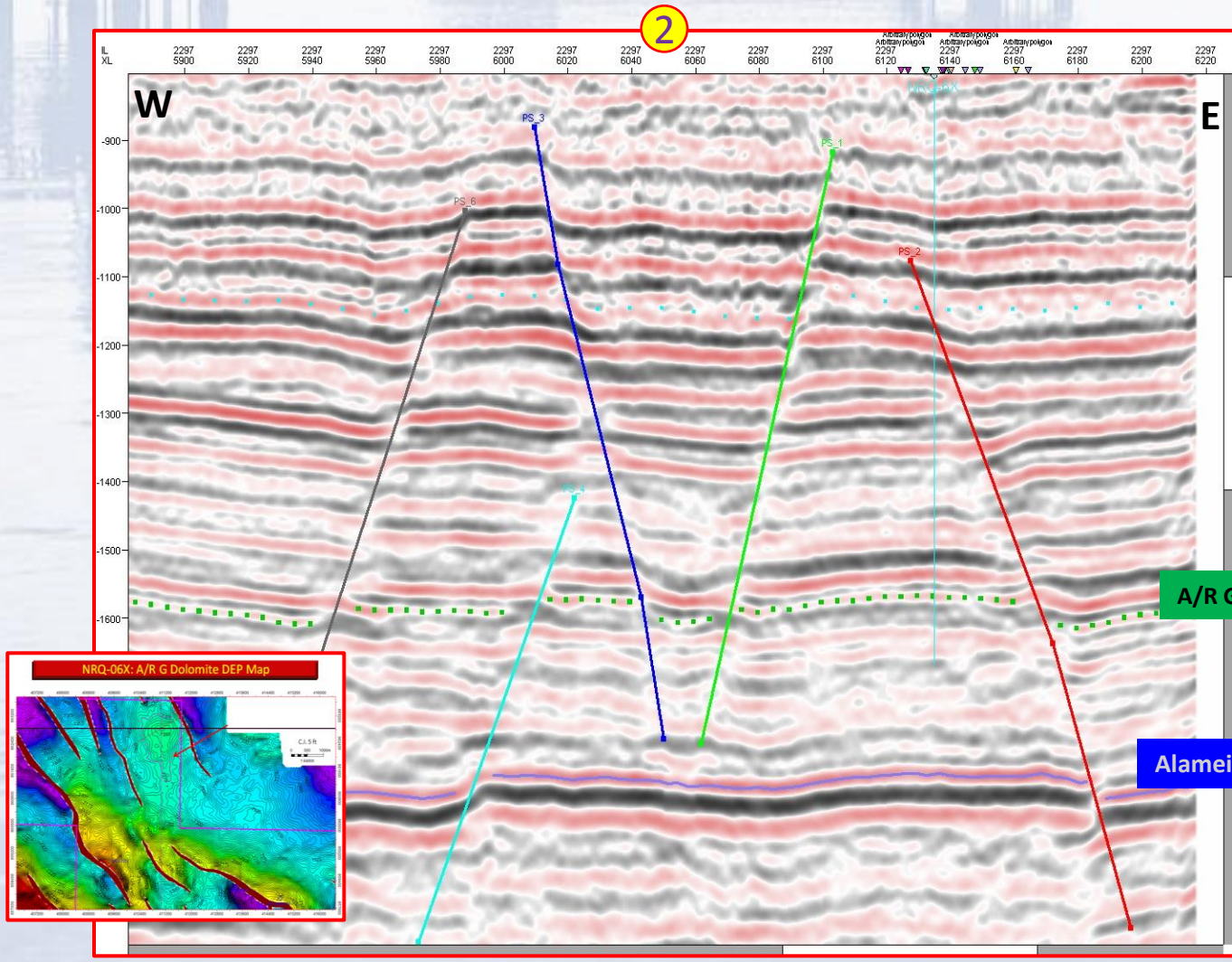
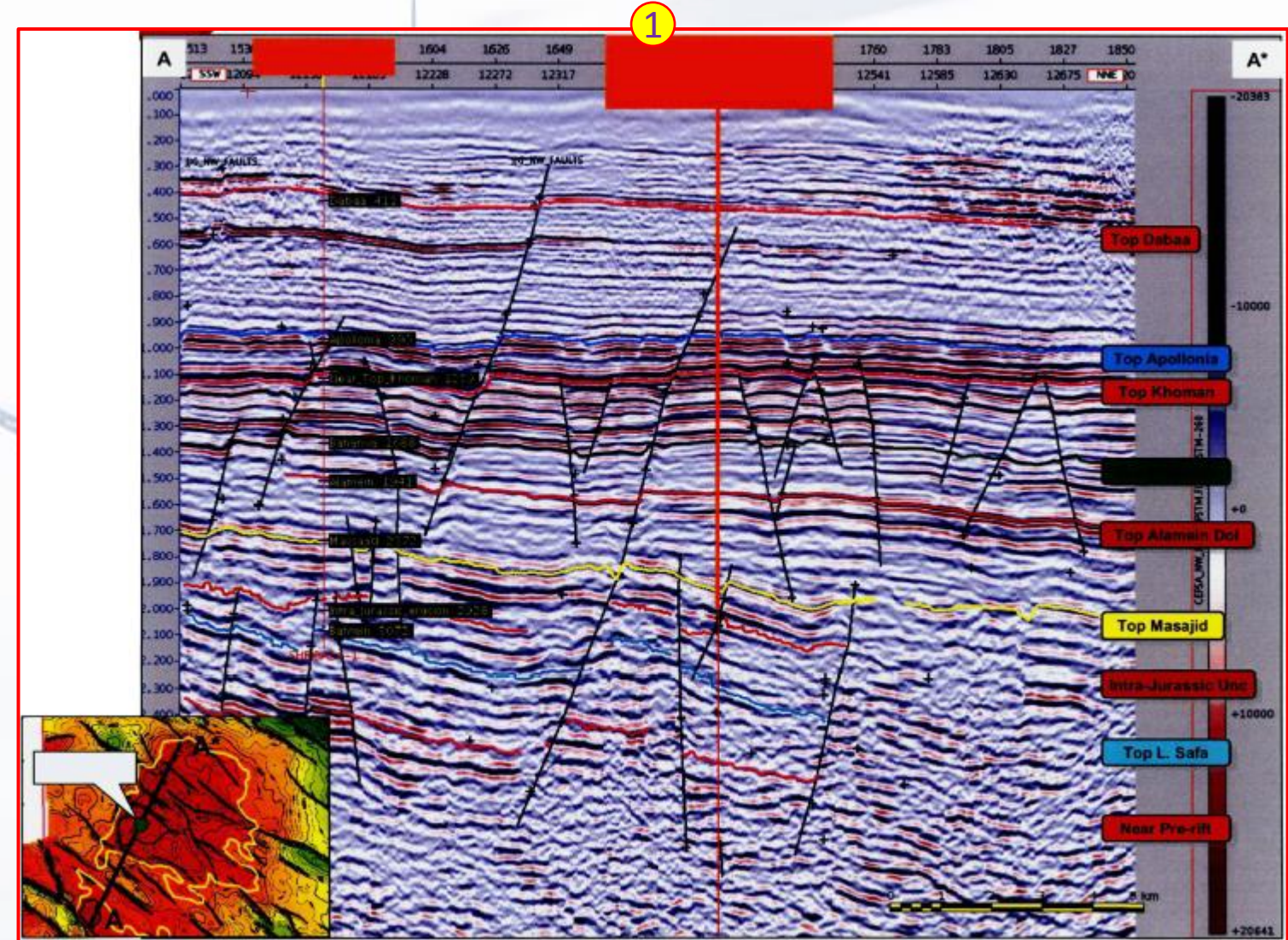
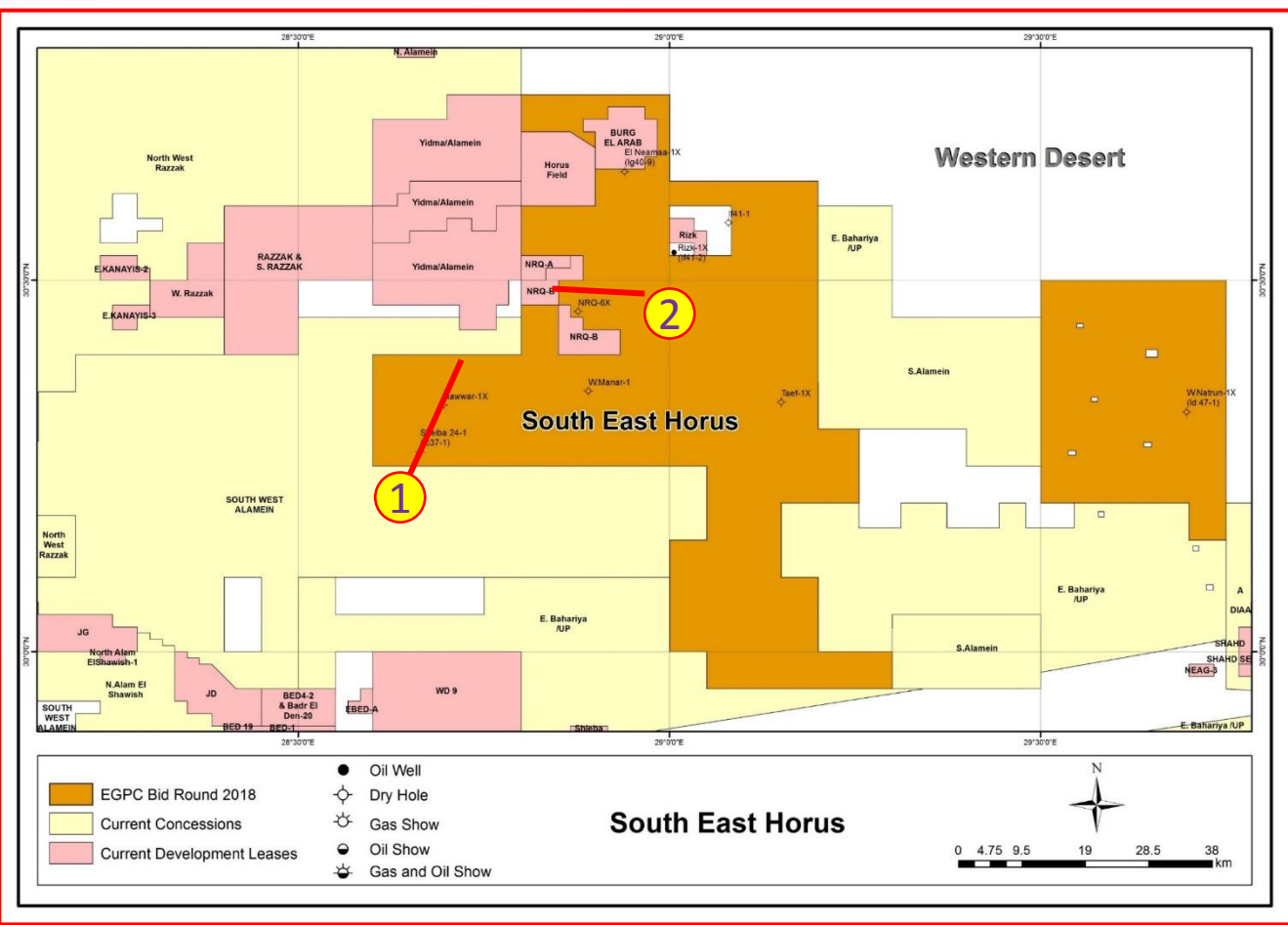
2D Seismic Survey: 4468 Km

3D Seismic Survey: 2659 Km²

✓ Cepsa Alamein: 1877 Km²

✓ Ina Nafta-Yidma 2007: 782 Km²

Seismic Model



Petroleum System



Petroleum System Elements & Hydrocarbon Plays

➤ **Basin:** The block is surrounded by Alamein Basin to the NW, the East Tiba Half Graben to the SE and the Northern flank of Abu Gharadig Basin to the SW.

➤ Sources:

The rock analysis in nearby areas shows that the source rock here are Khatatba Shale (Jurassic), A/R "F" Cretaceous and AEB Shale of L. Cretaceous.

➤ Reservoirs:

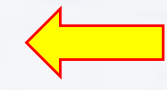
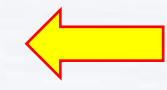
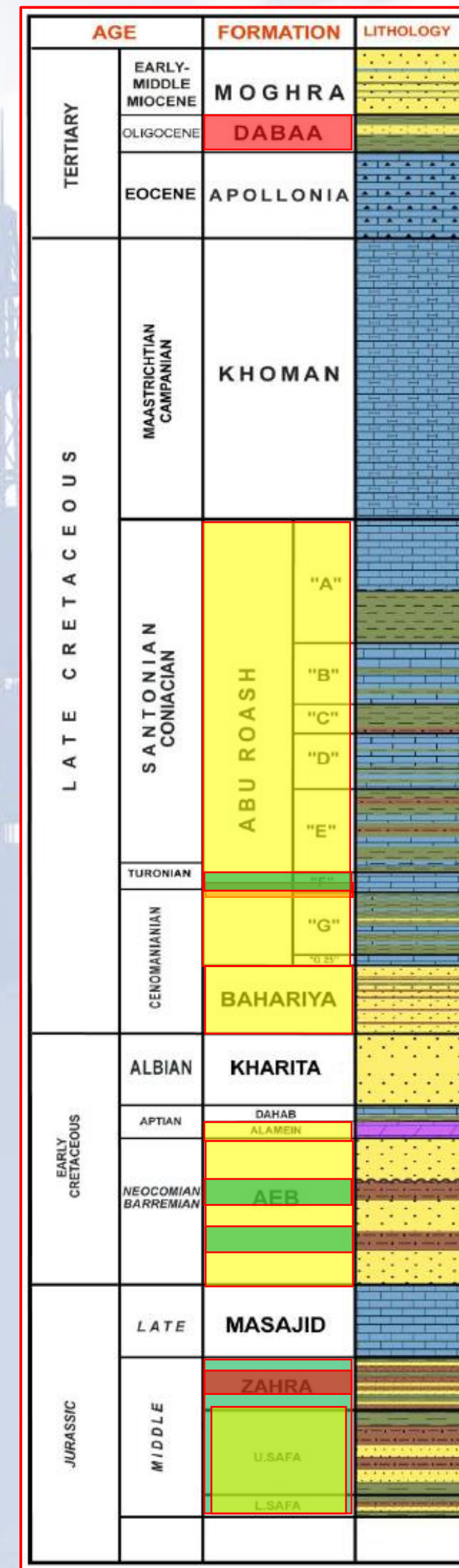
The main reservoirs in the block. The U. Cretaceous (A/R Mbrs and Bahariya), L. Cretaceous (Alamein Dolomite and AEB Fm) & Jurassic (Khatatba)

➤ Seal:

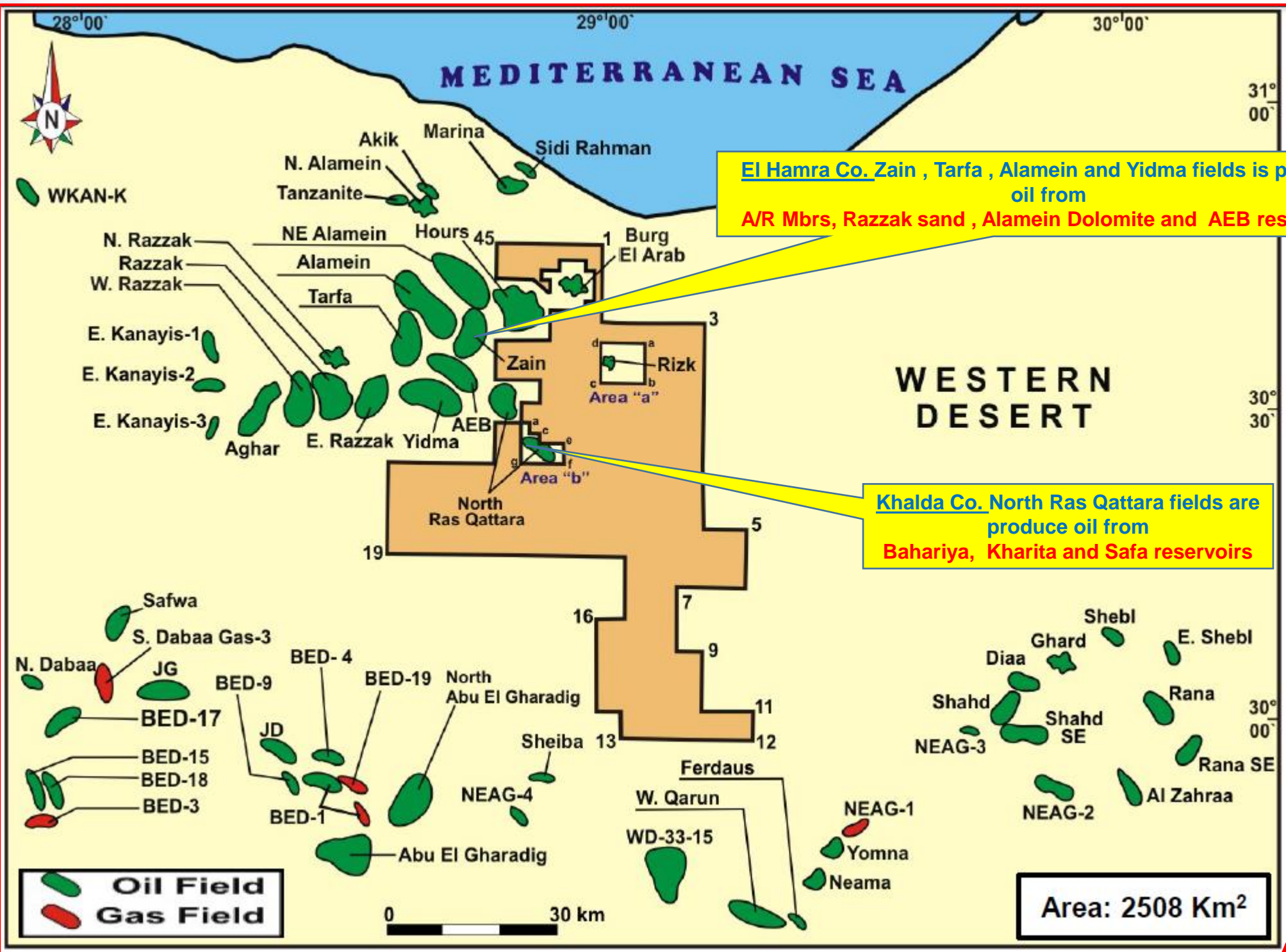
Main top seal for A/R "G" reservoirs is the A/R "G" shales and AR "F" carbonates and Alamein Dolomite , Dahab shale capped for AEB reservoir and Masajid , Khatatba shales for Safa reservoirs

➤ Trap Mechanism:

Mainly structure Trap in addition to combination of structural/ stratigraphic trap

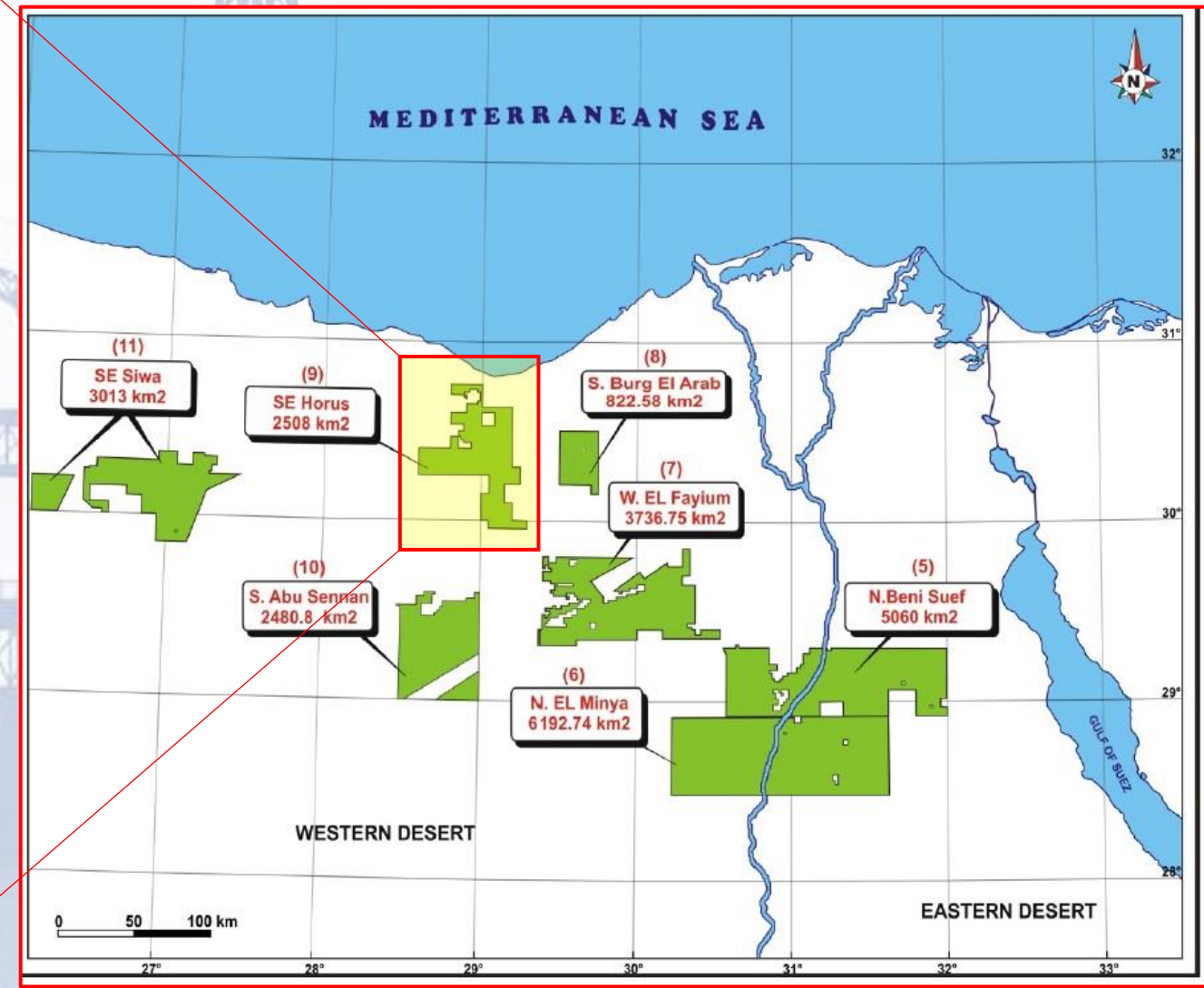


Nearby Fields & Productivity



El Hamra Co. Zain , Tarfa , Alamein and Yidma fields is produce oil from A/R Mbrs, Razzak sand , Alamein Dolomite and AEB reservoirs

Khalda Co. North Ras Qattara fields are produce oil from Bahariya, Kharita and Safa reservoirs



Nearby Fields:

The Block surrounded by several oil fields from the North west, Alamein/ Yidma Ridge (Burg El Arab, Horus, SE Alamein, Yidma, Tarfa and Razzak), from the SE (Shahd, Shahd SE, Diaa and Shebl east) and from the SW the oil and gas fields of NEAG , Bed & S. Dabaa..